

Robot*master*[®]

CAD/CAM FOR ROBOTS

Robotmaster®

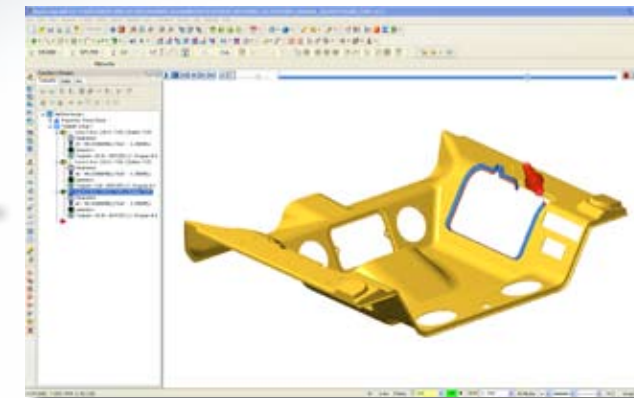
Seamless integration that delivers quick robot programming and tight conformance to design

Ideal for milling, trimming, welding, painting, sanding, polishing, de-burring, spray coating, dispensing, and more

Program Toolpaths for Manufacturing using Mastercam Mill or Router

Use a familiar process and tools from CNC machine programming
Leverage all the powerful Mastercam features including:

- fast geometry creation
- data translators for importing all CAD formats
- associative and feature based toolpath programming
- automatic toolpath generation

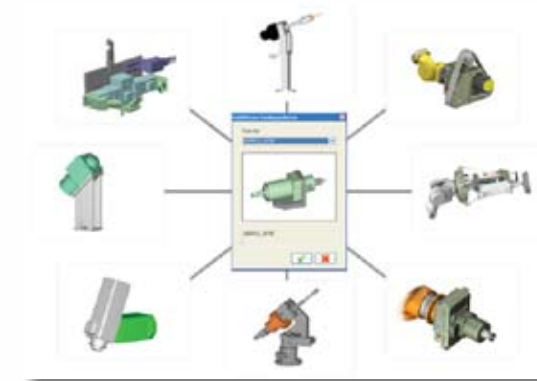


"Program adjustments are easier and more accurate using Robotmaster rather than making them manually ..."
- Tripp Plastics

Use Robotmaster's extensive library to setup your robot tasks in Mastercam

Choose from FANUC, ABB, MOTOMAN, KUKA, STAUBLI and more
Enter robot operating parameters such as:

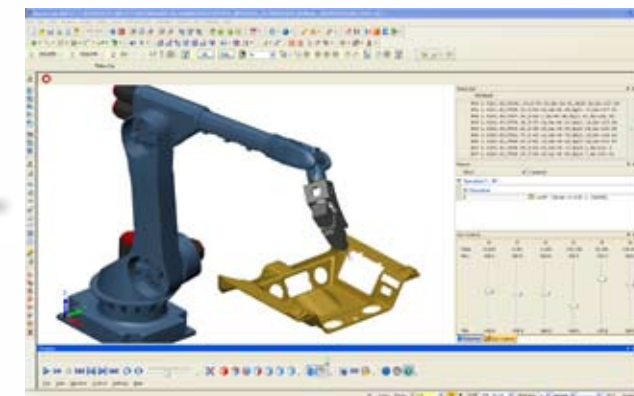
- End of arm tooling
- Setup (user frame and tool center point data)
- Motion parameters



"Now the trajectory is controlled exactly the way I planned it, working on the computer screen ..."
- AV&R Vision & Robotics

Validate and optimize programs with Robotmaster's robot simulator

View machine operation in continuous or step mode
Simulate individual operation or complete task
Detect collisions automatically
View robot only or entire manufacturing cell



**the cost-efficiency
and flexibility of robots
+
the ease of programming
of Mastercam**

Generate more profit with your robot

with off-line programming that eliminates lost production time

Eliminate point-by-point editing

for precise conformance to design in a fully integrated CAD/CAM solution

Break the programming barrier

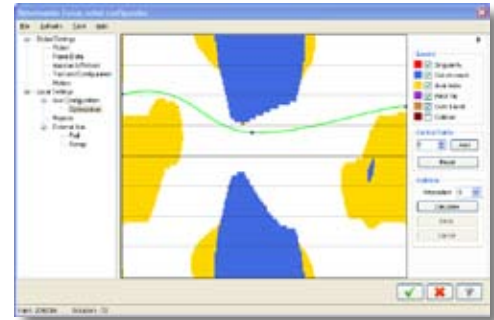
of singularity checking, collision detection, joint limit and reach issues in a few clicks of your mouse

Take advantage of your robot's maximum workspace

A proven solution for the automobile, aircraft, shipbuilding, composites, plastics and woodworking industries, and more . . .

Translate CNC toolpath data into optimized 6-axis robot programs

- Set robot configuration for optimal robot posture
- Manage motion between operations
- Analyse reach study automatically
- Control rotation around the tool precisely:
 - Avoid singularity, reach and joint limits
 - Optimize joint speeds to ensure smooth robot playback

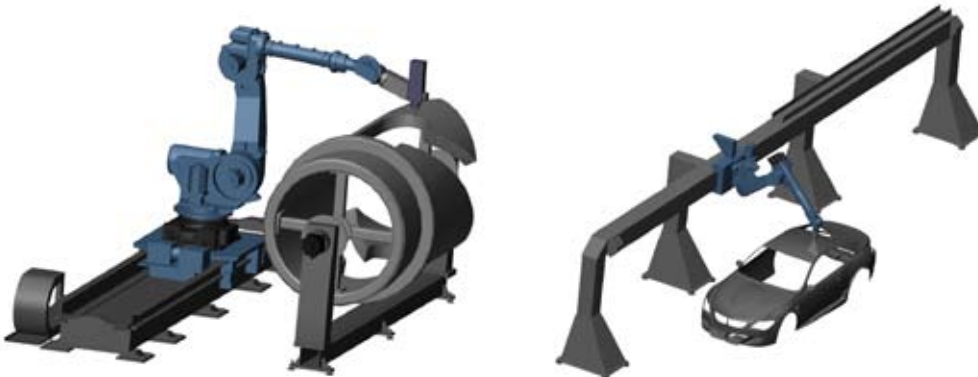


Generate robot-ready program files with Robotmaster's integrated post-processor

- Generate programs in robot native language
- Customize robot code output
- Manage long programs within limited robot memory by multi-file output

Extend range of travel for large work pieces

- Boat hulls, aircraft wings, wood working and others
- Easily program external axes (linear rails and/or rotary tables)



www.robotmaster.com